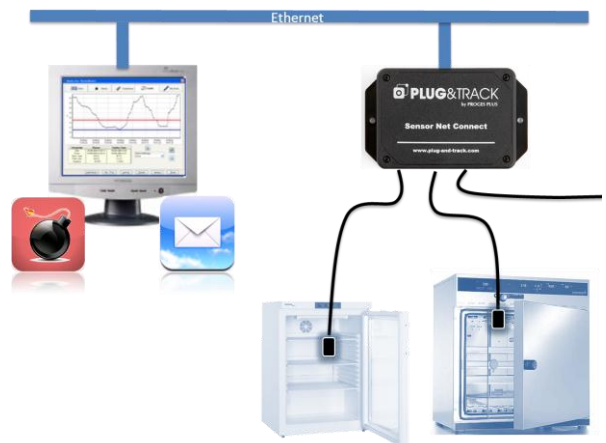


# Thermoscan IP

**PC based Temperature Monitoring System with Ethernet Probes**  
Control temperature in your cold rooms, laboratories, server rooms...  
**No extra cabling. Use your existing network!**

## Functions

- ☑ Monitor real time temperature
- ☑ Save data automatically on your PC
- ☑ Send alarms by Email and Pop-up
- ☑ Display and print graphs and list of temperatures



## Ethernet Probes

- Connect Probes directly on your Network using the Sensor Net Connect. **Wire** or **Wi-Fi** connection to the network.
- 3 probes can be plugged on each Sensor Net connect
- Unlimited number of Sensor Net Connect / Probes
- Easy installation in less than 15 minutes

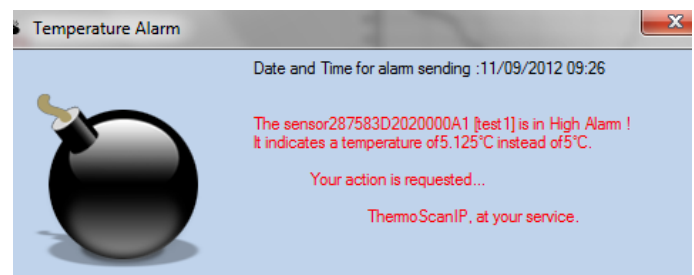
## 3 Types of sensors

- Digital sensor -55 to +110°C ± 0.5°C
- PT100 sensor -200 to +250°C ± 0.5°C
- Humidity Sensor 0 to 100% RH

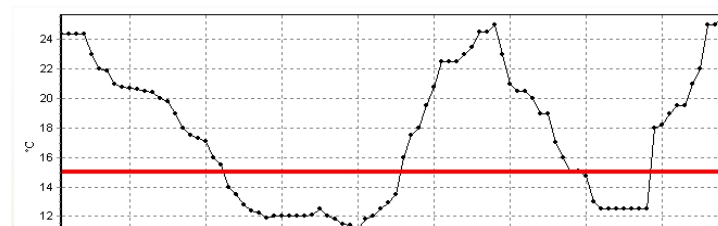
## Software Thermoscan IP

- Set up Sensor Net Connect and Probes
- Alarm thresholds with temporization
- Alarm mode (Pop-up, Email)
- Display and print graphs
- Temperatures history for several years
- Search data per period, without date limit
- Export to Excel, in PDF, send by email

**Easy and quick installation. In 15 minutes only, your real time temperature monitoring system is in use**



List of Values		List of Alarms	Graph
DateTime	Value		
05/09/2012 15:04:19	5,81		
05/09/2012 15:03:18	5,75		
05/09/2012 15:02:16	5,75		
05/09/2012 15:01:15	5,75		
05/09/2012 15:00:14	5,69		
05/09/2012 14:59:13	5,69		
05/09/2012 14:58:12	5,63		
05/09/2012 14:57:10	5,69		
05/09/2012 14:56:09	5,63		
05/09/2012 14:55:00	5,60		



## Sensor Net Connect

**A simple, cost effective and user friendly solution to control the temperature of your equipments in real time using your standard Ethernet network. No specific wiring required.**

Sensor Net Connect is a smart hub that you connect directly on your Ethernet Network and on which you can plug up to **3 temperature or humidity sensors**.

The Sensor Net Connect transfers data registered by the sensors at the desired frequency. Data are sent directly to Thermoscan IP. The system informs you whenever a temperature threshold is exceeded. Thermoscan IP offers you efficiency and simplicity.



### Sensor Net Connect features

- Embedded web server
- Works with fixed IP addresses or DHCP
- Can connect up to 3 sensors
- Connects to the network via Ethernet Cable or Wi-Fi (802.11b WEP or WPA)
- 9V powered
- ABS casing Dimension 14 x 8.4 x 3.5 mm

### Digital Sensor

- High accuracy digital sensors -55/+110°C
- Accuracy  $\pm 0.5^{\circ}\text{C}$
- Resolution  $0.1^{\circ}\text{C}$
- Cable length : 2 meters

### Temperature and Humidity Sensor

- High accuracy relative Humidity 0/100% -40/+85°C
- Accuracy 10/90%  $\pm 3\%$  /  $\pm 0.2^{\circ}\text{C}$  at  $25^{\circ}\text{C}$
- Resolution 0.4% /  $0.1^{\circ}\text{C}$
- Cable length : 2 meters
- Dimensions 80x80x21 mm

### PT 100 Sensor for low and high temperatures

- PT100 -200/+250°C
- Accuracy  $\pm 0.3^{\circ}\text{C}$  at  $0^{\circ}\text{C}$  (Class B)
- Resolution  $0.1^{\circ}\text{C}$
- Cable length : 2 meters
- Diameter 6 mm, length 40 mm 316L. Teflon wire
- Connection to the Sensor Net connect through PT100 interface

### PT100 to Sensor Net Connect Interface

- Connects any PT 100 sensor (3 or 4 wires) to the Sensor Net connect
- Converts analog values to digital values
- Electrically powered by the Sensor Net Connect



Extension cables available (10 meters, 25 meters)